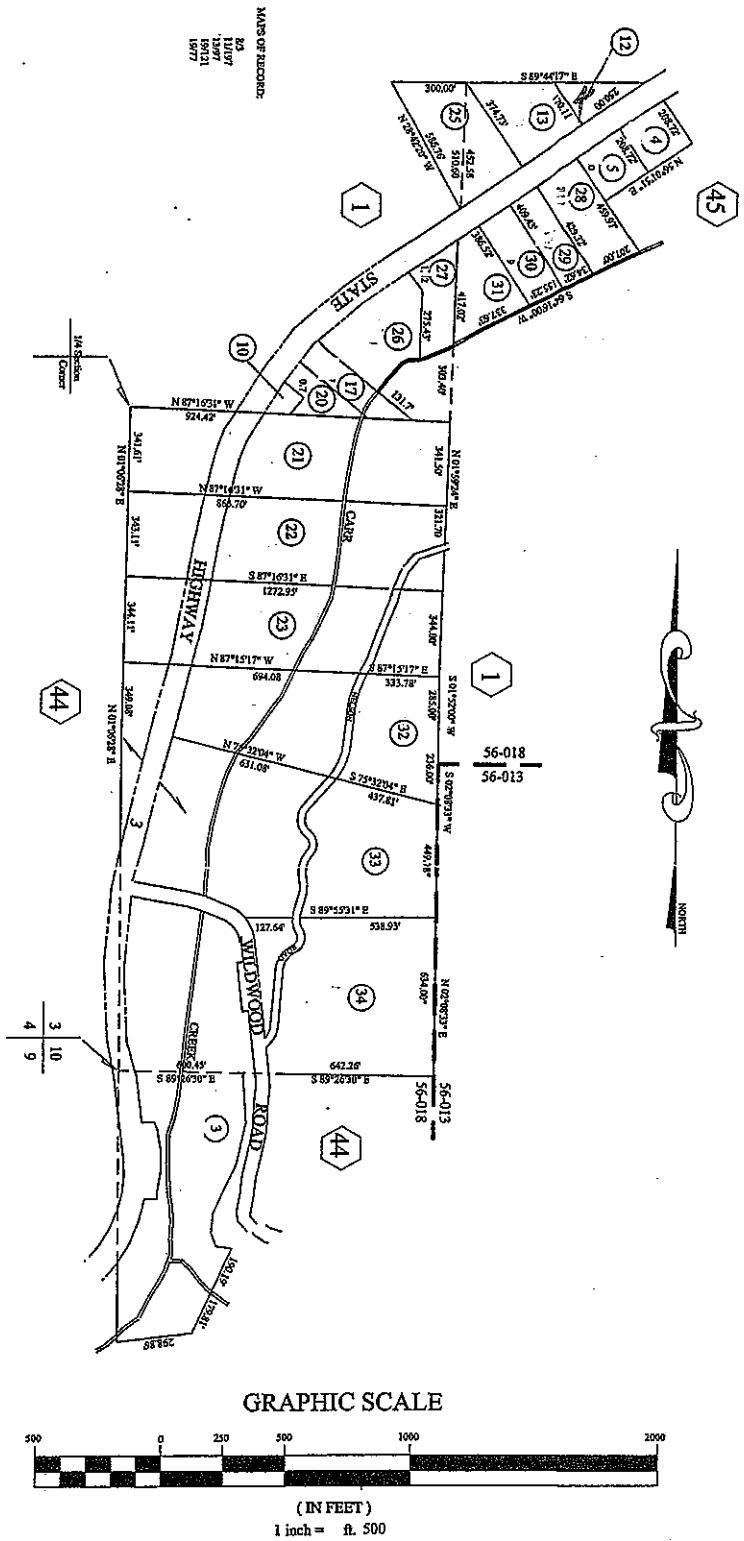


IMPORTANT This map is prepared by the Trinity County assessor for tax assessment purposes and it is furnished as a convenience only. There is no guarantee as to dimensions, distances or bearings.

PORTION OF W. 1/2 OF SECTION 3 & NW 1/4 OF NW 1/4 OF SECTION 10,
T. 31 N., R. 11 W., M.D.B. & M.

17-390
56-018



ALTHOUGH PAGED IN WHOLE OR IN PART ON RECORDS OF TRINITY COUNTY, THIS MAP IS NOT A TRINITY COUNTY ASSESSOR'S OFFICE ASSESSMENT PURPOSES ONLY.
 COPYRIGHT 1994, TRINITY COUNTY ASSESSOR'S OFFICE

TRINITY COUNTY ASSESSOR'S OFFICE
 BOOK SEVENTEEN PAGE THIRTY NINE
 APRIL 6, 2007